

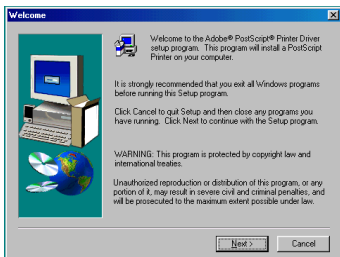


DDAP Instructions for Creating a PostScript File Quark 4 for Windows 95/98 using AdobePS and the DDAP PPD

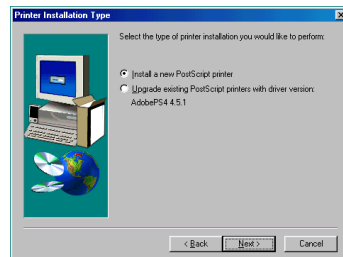
Please obtain the latest version of Adobe Printer Driver at:
<http://www.adobe.com/products/printerdrivers/main.html>

Also obtain the DDAP PPD from the DDAP web site at:
http://www.ddap.org/tools/univppd/DDAPv3_PPD.zip

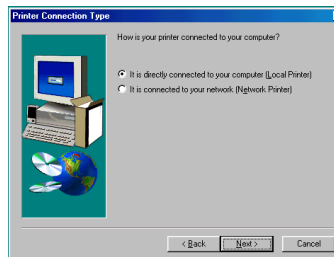
1. You have to install the Adobe Printer Driver on your system as a new PostScript printer. You have to copy the DDAPv3.PPD to the Windows\System directory. Follow the instruction when you run the installer select FILE as Local Port (1d) and select the DDAPv3.PPD as the printer (1e). You should configure this printer by following the examples below.



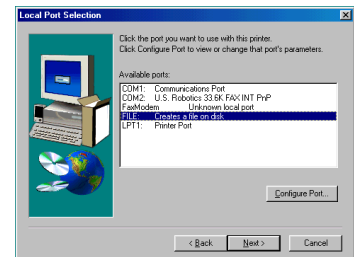
1a. When you install the printer you will see the dialog box above, click Next.



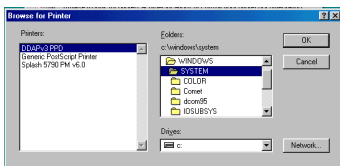
1b. Install a new PostScript printer, click Next.



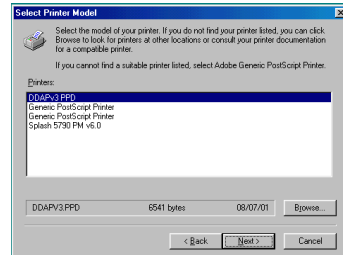
1c. The printer should be connected to your computer, click Next.



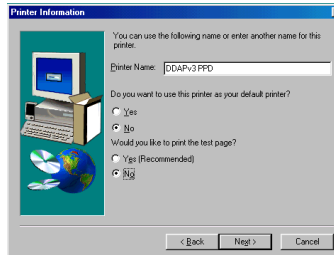
1d. FILE: should be selected as the printer Port, then click Next.



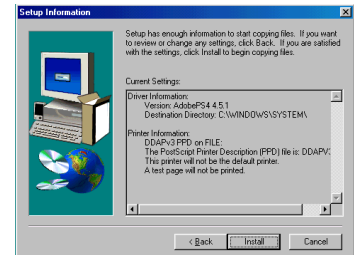
1e. Click Browse to locate the DDAPv3 PPD and select it, then click OK



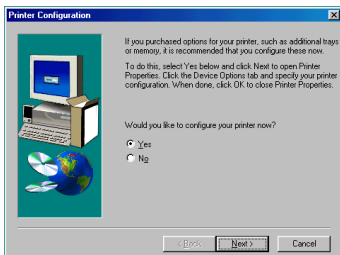
1f. Select the DDAPv3 PPD as the model for your printer, then click Next.



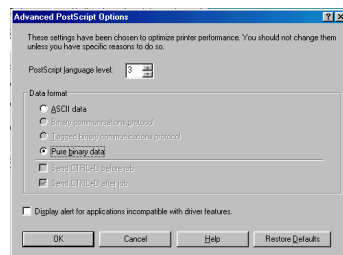
1g. Select No for default printer and No to print a test page, then click Next



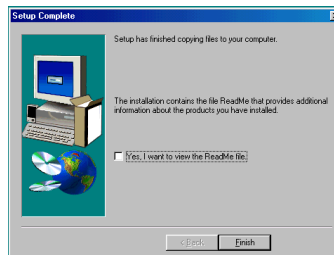
1h. Make sure the info is correct, then click Install.



1i. Select Yes to configure the Printer, then click Next.



1j. Select Advance, on the PostScript Tab, select Pure Binary data, click OK.



1k. Finally click Finish.

Note: When you add a new printer driver or change the port of a printer driver to FILE:, the new printer driver/port is added to the Windows 95/98 Win.ini file. However, the path to your Type 1 fonts may not be listed with this new printer driver/port. If this is the case, the Type 1 fonts used in your document will not be included in the PostScript file, and Courier will be substituted in their place. Deactivating and then activating Type 1 fonts through Adobe Type Manager will update their path in the Win.ini file.

2. Document Setup: (Document Setup: **File** menu) Ensure that the document page size is not larger than the maximum image area. Check to ensure that the live matter is within the trim and safety of the publications in which the ad will be printed, if the ad goes beyond the trim, that there is sufficient bleed image defined. The DDAP Association recommends that the file's image size is made larger than the trim and bleed and that actual trim and bleed marks be included along with agency information and color bar (see the DDAP Sample pages for examples).

3. Spot Colors: (Edit Menu: **Colors...**) Unless it is a paid-for spot color, check to ensure all colors are process. Also check that all illustrations have spot colors converted to process.

- Select the Color
- Edit the Color
- Model: **Pantone** or **CMYK**
- Spot Color: **Off**
- Click: **Save**

4. Font Usage: (Utilities menu: **Font Usage...**) Check all fonts to ensure they are OK. Confirm that all fonts read style <<plain>> in this menu.

5. Picture Usage: (Utilities menu: **Picture Usage...**) Check for any pictures that need updating or are missing.

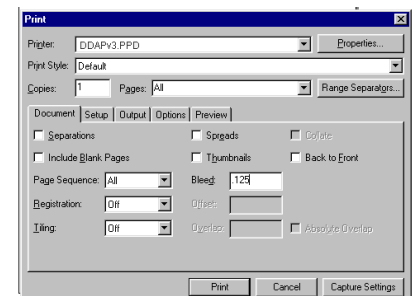
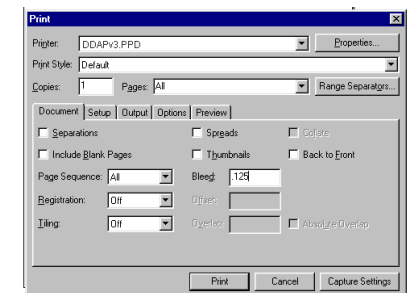
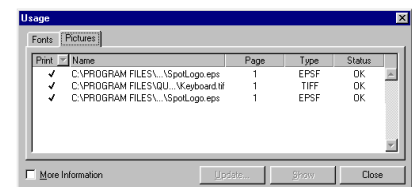
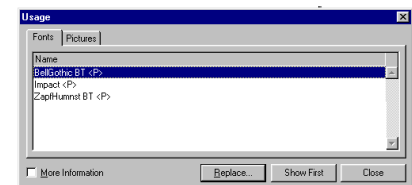
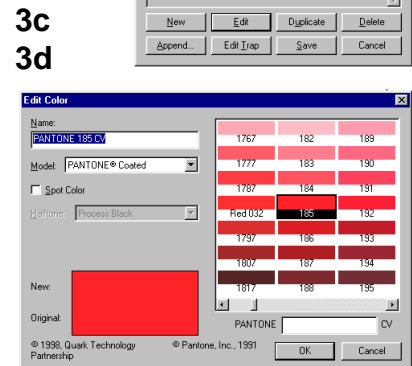
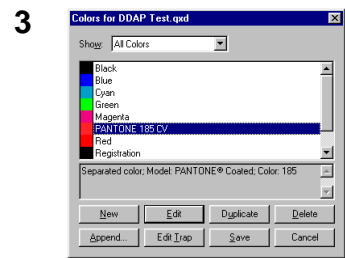
- Print column:
- Type: **EPS** or **TIFF**; No CT
- Status: **OK**

6. Print Dialog (File menu: Print... **Document** Tab)

- Separations: **Off**
- Spreads: **Off**
- Include Blank Pages: **Off**
- Thumbnails: **Off**
- Back to Front: **Off**
- Page Sequence: **All**
- Registration: **Off**
- Tiling: **Off**
- Bleed: **.125"**

7. Print Dialog (File menu: Print... **Setup** Tab)

- Printer Description: **DDAPv3 PPD**
- Paper Size: **DDAP_Single** or **DDAP_Spread**
- Reduce or Enlarge: **100%**
- Page Positioning: **Center**
- Fit in Print Area: **Off**
- Orientation: **Portrait**

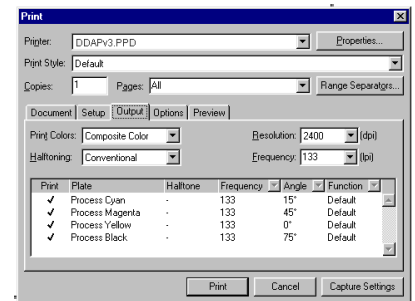


8. Print Dialog (File menu: Print... Output Tab)

- Print Colors: **Composite Color**
- Halftoning: **Conventional**
- Resolution: **2400**(dpi)
- Frequency: **133** (lpi)

Note: C, M, Y, K, should be the only colors listed for 4/c ads.

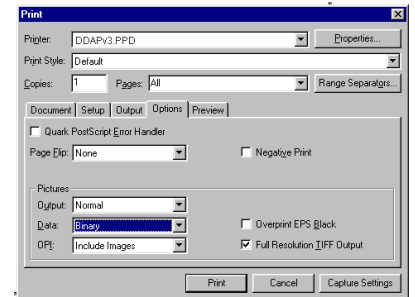
8



9. Print Dialog (File menu: Print... Options Tab)

- Quark Postscript Error Handler: **On**
- Paper Flip: **None**
- Negative Print: **Off**
- Pictures: Output: **Normal**
- Data: **Binary**
- OPI: **Include Images**
- Overprint EPS Black: **On**
- Full Resolution TIFF Output: **On**

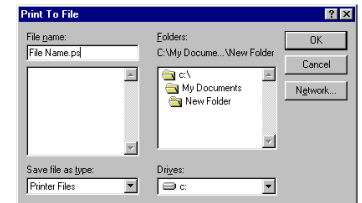
9



10. Print to file: After you have completed all the settings above, you may click on the **Print** button at the bottom of the Page Setup/Print Dialog box. You will get a **Print to File** Dialog box.

- Navigate to the folder you wish to save the file into:
- File name: Type your **File Name.ps**
- Save file as type: **Printer Files**
- Click: **OK**

10



Note: The default extension that Windows uses will be “.prn”; you should change it to a “.ps” extension. The “.ps” extension is more readily recognizable by Acrobat.